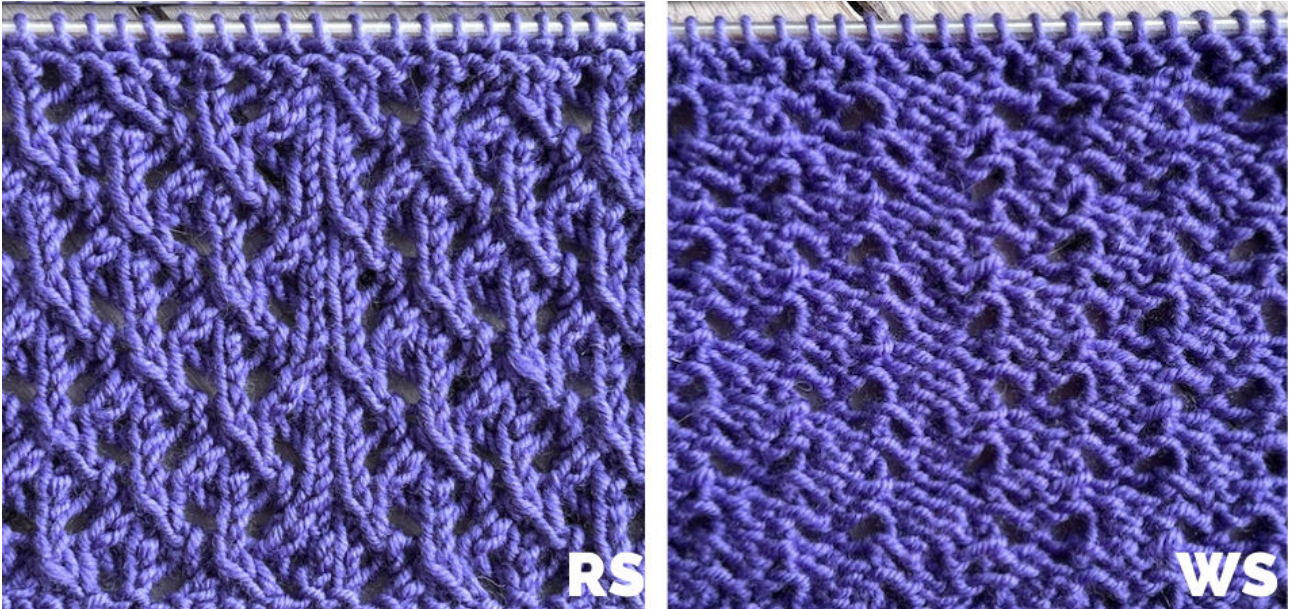




So Woolly

English Mesh Lace (multiples of 13 stitches)



Abbreviations

CO: Cast on

st: Stitch

RS: Right side of the work

K: Knit

P: Purl

yo: Yarn over

k2tog: Knit two stitches together (right-leaning decrease)



So Woolly

ssk: Slip one stitch as if to knit, slip the next, put both back onto the left-hand needle, and knit them together (Slip slip knit, it's a left-leaning decrease)

cdd: Slip two stitches together as if to knit, knit the next, and pass the slipped stitches over (Central Double Decrease)

English Mesh Lace knitting pattern

CO multiples of 13 (this number doesn't include selvage stitches).

Rows 1 and 9 (RS): *K1, yo, ssk, K1, k2tog, yo, K1, yo, ssk, K1, k2tog, yo, K1*. Repeat from * to *, to end

Row 2 and every even row: P across

Row 3: *K1, yo, K1, cdd, K1, yo, K1, yo, K1, cdd, K1, yo, K1*. Repeat from * to *, to end

Rows 5 and 7: *K1, k2tog, yo, K1, yo, ssk, K1, k2tog, yo, K1, yo, ssk, K1*. Repeat from * to *, to end

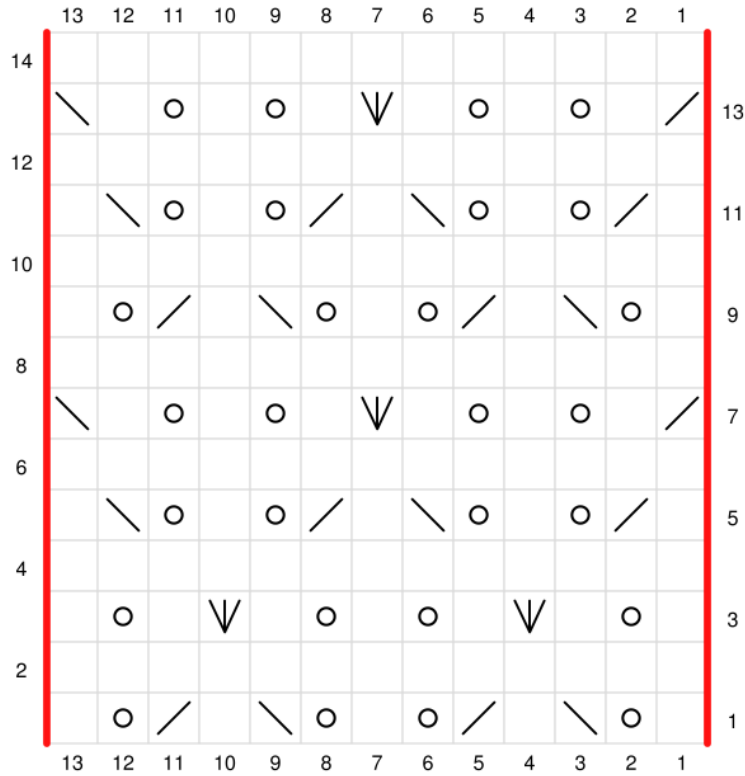
Rows 7 and 13: *k2tog, K1, yo, K1, yo, K1, cdd, K1, yo, K1, yo, K1, ssk*. Repeat from * to *, to end

Row 14: P across.

Repeat rows 1 - 14 for the pattern



So Woolly



- RS: Knit
WS: Purl
- RS: Purl
WS: Knit
- Slip knitwise, slip knitwise, knit stitches together
- Knit 2 together
- Yarn over
- Central double decrease